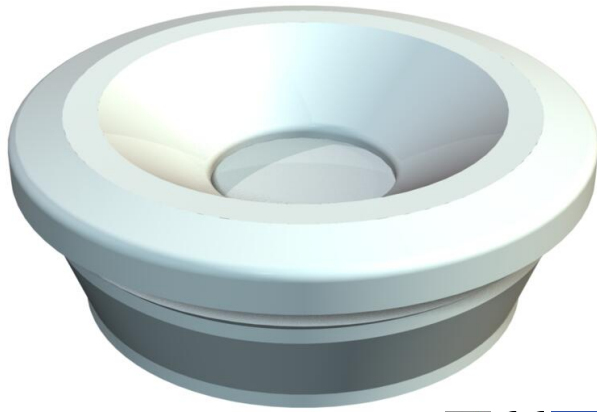


Technical data sheet

Nipple 89, light grey

Item number: 2012030



Closed entry nipple with perforation membrane for cable diameters 7–13 mm.
Ideal for simple cable routing in housings or through thin sheet metal.
Required hole diameter 18.5–19 mm, wall thickness max. 1.8 mm.



EVA Ethylene vinyl acetate

Master data

Item number	2012030
Type	89
Description 1	Nipple
Manufacturer	OBO
Dimension	Ø7-13mm
Colour	Light grey; RAL 7035
Material	Ethylene vinyl acetate
Smallest sales unit	100
Unit of quantity	Piece
Weight	0.111 kg
Weight unit	kg/100 pc.

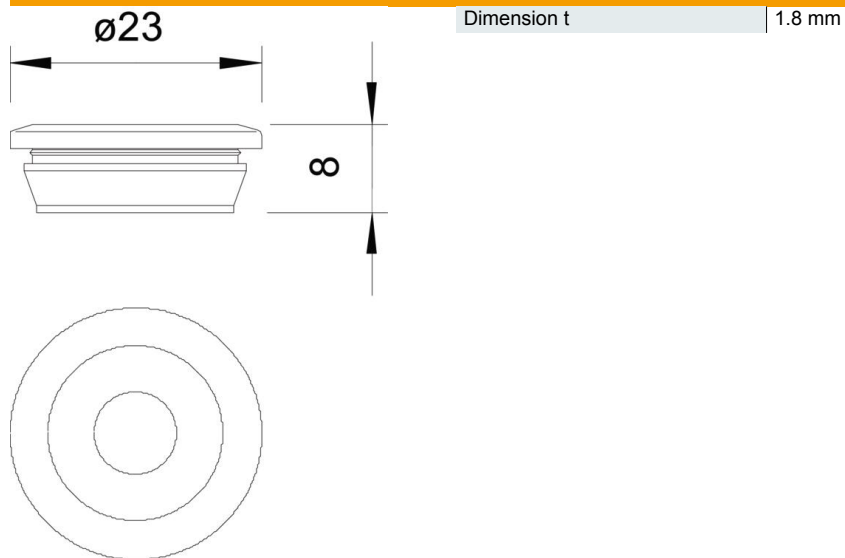
Technical data sheet

Nipple 89, light grey

Item number: 2012030



Dimensions



Technical data

Version for	Closed
Flame-resistant	acc. to VDE 0471/DIN 695 Part 2-1, test temperature 650°C
for diameter, max.	13 mm
for diameter, min.	7 mm
for wall thickness, max.	1.8
for wall thickness, min.	1.8
Size	PG 11
Halogen-free	yes
Nominal size PG	11